

# GeoMax General Catalogue 2012



**GE MAX**  
Part of Hexagon Group

Works when you do

# GeoMax

## About Us

At GeoMax we provide a comprehensive portfolio of integrated solutions by developing, manufacturing and distributing quality construction and surveying instruments and software. We address professional as well as occasional users with our easy-to-use, yet highly productive total stations, GPS/GNSS instruments, software, lasers, optical and digital levels and accessories.

Being part of the Hexagon Group, a global technology group with strong market positions within measurement



technologies, grants GeoMax access to state of the art development and production facilities in Europe, America and Asia. Our technology is supported by a broad sales and service network covering all continents and over 100 branches. Through this continually growing distribution and service network, our products are available worldwide delivering outstanding price-performance ratio.

At GeoMax, we concentrate on providing you with the quality and functionality you need



in your daily work. Removing the frills enables us to deliver products that “work when you do” – independent of weather, location and task. You get a price-to-performance ratio which you need to succeed in your tough business environment.

**GEOMAX**  
Part of Hexagon Group



# GeoMax

## GeoMax Total Stations — 4

Zoom80 Series — 6

Zoom30 Series — 10

Zoom20 Series — 12

Zipp10 Series — 14

## GeoMax GPS/GNSS — 16

Zenith30 Series — 18

Zenith10 & 20 Series — 20

ZGP800 Series — 24

## GeoMax Digital Level —

ZDL700 Series — 26

## GeoMax Digital Theodolite

Zipp02 — 27

## GeoMax Automatic Level

ZAL300 Series — 28

ZAL100 Series — 29

## GeoMax Laser Rotator

ZEL400 Series — 30

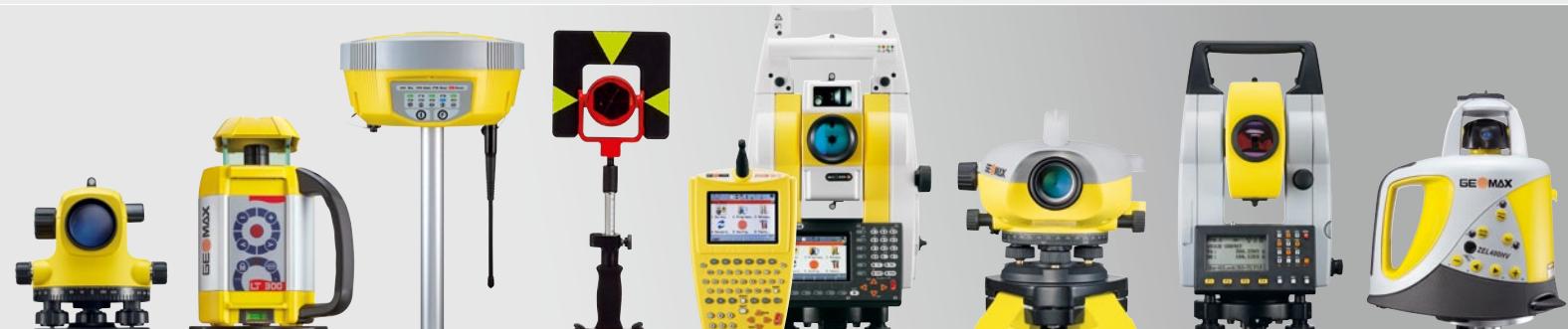
ZLT300/200 Series — 31

## GeoMax Software

GGO – GeoMax Geo Office — 32

## GeoMax Accessories — 34

## GeoMax Quality Management — 38



---

# GeoMax Total Stations



## Zoom80 Series

Zoom80R robotic and Zoom80S servo are technologically advanced motorised total stations that scout, track, and aim reflectors fully automatically.



## Zoom30 Series

The Zoom30 total station is GeoMax's top of the line manual total station providing outstanding performance and class leading accXess™ EDM technology.



## Zoom20 Series

Efficient, Fast, Reliable. The GeoMax Zoom20 total station delivers exceptional performance and flexibility, whatever your application.



## Zipp10 Series

The Zipp10 total station provides a choice of angular accuracies and distance measurement technology to suit your budget.

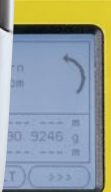


accXess 10

accXess 6

accXess 4

GEOMAX



# GeoMax Total Station Zoom80 Series



## **SCOUT360**

Scans the entire working area within seconds to quickly find you. All measurement work can therefore be performed as one-man by remote control.



## **TRACK360**

Provides continuous tracking of targets. Once locked onto a prism, the instrument will remain precisely targeted onto the moving prism.



## **AIM360**

The telescope is precisely aimed at any prism, without needing to look through the telescope. Measurements are performed automatically with constant and repeatable accuracy.

## **STReAM360**



**SCOUT360**



**TRACK360**



**AIM360**





### accXess™ EDM Technology

GeoMax's accXess EDM Technology provides class-leading reflectorless measurements up to 1,000 m. The extra small laser footprint and sophisticated signal processing technology, ensures you maximum accuracy regardless of the distance or conditions.



# GeoMax Total Station

## Zoom80 Series



### Robotic Surveying

Imagine an instrument that does the majority of the work for you, allowing you to survey on your own. There is no need for assistance, it is quick to set up and has many easy-to-use functionalities, simplifying the entire process even more. The GeoMax Zoom80R models provide everything you ever desired in your daily work. Wide angle search technology quickly locates the survey pole and once positioned, it continues to follow the prism as you move.

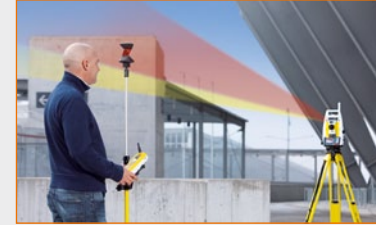
### Technical Data

Accuracy (ISO 17123-3)	5", 2"
Prism (range, accuracy)	3'500 m, 1 mm + 1.5 ppm
Prism, long-range (range, accuracy)	10'000 m, 5 mm + 2 ppm
Non-prism (range, accuracy)	1'000 m, 2 mm + 2 ppm
SCOUT360 Range 300 m, Typical search time 5 - 10 sec	
TRACK360 Range (round / 360° prism) 800 / 600 m	
AIM360 Range (round / 360° prism) 1'000 / 800 m	



### Automated Surveying

All Zoom80 total stations are equipped with target recognition technology, for automated centring on prisms. It is only necessary to roughly aim the telescope towards the prism with the optical sight. Precise targetting and position measurement is then performed automatically by the instrument. With Automated Surveying you are much more productive, since each measurement can be completed in only a few seconds.



### NavLight

The NavLight fitted as standard in the telescope, is a practical alignment aid for speeding up staking-out work. The flashing red and yellow lights guide the rodman quickly and exactly into the line of sight.

### GeoMax Zoom80S (Servo) 5", 2"

AIM360, TRACK360

### GeoMax Zoom80R (Robotic) 5", 2"

AIM360, TRACK360, SCOUT360

### GeoMax Zoom80C Windows CE Controller

Display ¼ VGA color LCD,  
touch screen, 34 keys



---

### Powerful XSite Software

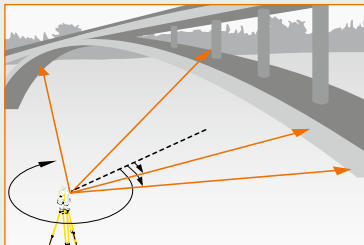
Xsite software, together with a complete range of applications, cover the requirements for all measurement tasks. From simple measuring to complex road stake-outs, you can be certain that GeoMax "works when you do".

### Standard Applications

- Setup
- Survey
- Stake Out
- CoGo Routines

### Optional Applications

- Volume
- Reference Line
- Area Division
- Hidden Point
- Sets of Angles
- Road

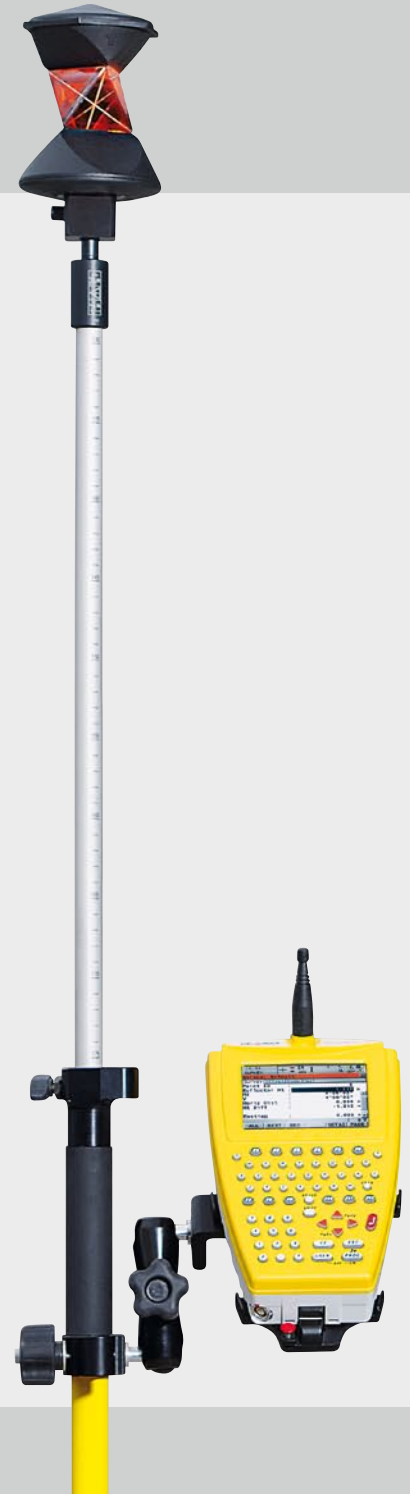


### Zoom80C Controller

When operating by remote control, the functionality of the Zoom80 total station is even further enhanced. The controller provides one-man robotic surveying with complete control of all measurement tasks from the survey pole.

The display and software are the same as those on the total station. Therefore the Zoom80C controller lets you measure remotely as easy as directly on the instrument.

The controller, battery, radio modem and antenna form a single compact unit that can be conveniently attached to the survey pole. Together with a standard passive prism, provides a light-weight pole setup.



# GeoMax Total Station

## Zoom30 Series

At GeoMax we understand that you want complete control over your data and communication. Choose between Bluetooth, USB and RS232 to transfer data with the Zoom30, to ensure that it "Works when you do".



### accXess™ EDM Technology

GeoMax's accXess EDM Technology provides class-leading reflectorless measurements. Exceptional reflectorless performance up to 600m. The extra small EDM footprint and sophisticated signal processing technology ensures you maximum accuracy regardless of the distance or conditions.



### USB Port & Data transfer

Data transfer, import and export is easy using the USB interface port on the GeoMax Zoom30. Data can be directly transferred from the field to CAD and other software using Bluetooth or USB. GeoMax's PC software GeoMax Geo Office is provided together with the Zoom30 series and allows you to view, edit and transfer data with ease.

### Bluetooth

Use Bluetooth to connect your GeoMax Zoom30 instrument to a wide variety of external devices including PCs and PDAs. The integrated antenna provides maximum comfort and security without sacrificing performance.



### Technical Data

Hz, V Standard deviation (ISO 17123-3)	2", 3", 5", 7"
Compensator system	Quadruple-axis compensation
Measuring range with circular prism	> 7'500m
Accuracy on reflector (Fine/Tracking)	2 mm + 2 ppm/5 mm + 2 ppm
Reflectorless range accXess 6/accXess 4	600/400m (white target)
Accuracy reflectorless	3 mm + 2 ppm (>500 m 4 mm + 2 ppm)
Communication	USB, Bluetooth, USB Host, RS232

### GeoMax Zoom30 accXess6

Distance measurement to reflector and 600m reflectorless measurement

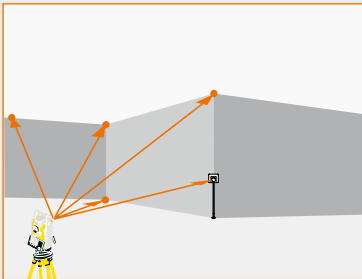
### GeoMax Zoom30 accXess4

Distance measurement to reflector and 400m reflectorless measurement

## Powerful Apps

Every Zoom30 series instrument comes with a complete range of powerful Applications. From survey to stake-out to CoGo and volume calculations the Zoom30 has an App to get the job done.

- Survey
- Set-up with Resection
- Set Out
- Area 3D & Volume
- Remote Elevation
- Construction
- Reference Element
- CoGo Routines
- Missing Line Measurement
- Two Prism Offset



# GeoMax Total Station

## Zoom20 Series



### Onboard Software

Easily control your data with the flexible and simple to use onboard software. Areas and Volumes, Reference Elements, CoGo and more can be accessed using the large graphic display. Import and Export in the format you want for total control and flexibility.



### accXess™ EDM Technology

GeoMax's accXess EDM Technology delivers outstanding reliability and class leading accuracy with and without a prism in even the most difficult conditions. Reflectorless accXess EDM Technology is available as accXess2 (250 m) and accXess4 (400 m) on the GeoMax Zoom20 series.



### Built for all environments

The Zoom20 withstands the toughest environments. With the optional Polar certification the Zoom20 is individually tested at -30° C. With our extensive factory tests, you can be sure that GeoMax "Works when you do!".

### Technical Data

Hz, V Standard deviation (ISO 17123-3)	2", 3", 5", 7"
Compensator system	Quadruple-axis compensation
Measuring range with circular prism	3'500m
Accuracy on reflector (Fine/Tracking)	2mm + 2ppm/5 mm + 2ppm
Reflectorless range accXess 4/accXess 2	400/250m (white target)
Accuracy reflectorless	3 mm + 2ppm (>500m 4mm + 2ppm)
Communication	USB, RS232

#### GeoMax Zoom20 accXess4

Distance measurement to reflector and 400m reflectorless measurement

#### GeoMax Zoom20 accXess2

Distance measurement to reflector and 200m reflectorless measurement

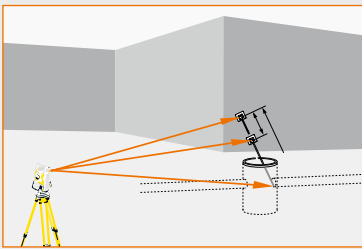
#### GeoMax Zoom20

Distance Measurement on Reflector

## Powerful Apps

Every Zoom20 series instrument comes with a complete range of powerful Applications. From survey to stake-out to CoGo and volume calculations the Zoom20 has an App to get the job done.

- Survey
- Set-up with Resection
- Set Out
- Area 3D & Volume
- Remote Elevation
- Construction
- Reference Element
- CoGo Routines
- Missing Line Measurement
- Two Prism Offset



# GeoMax Total Station Zipp10 Series



## Laser plummet

Never again will centring over a point be difficult. With GeoMax's laser plummet, centring is simple. The bright laser beam is easily visible and eliminates time consuming procedures required with an optical plummet. You win by saving time at every set-up.



## Easy to learn – Simple to use

Intuitive design makes operating GeoMax products a breeze. Simply turn on and you can start working immediately. The full numeric keyboard ensures optimized usability and productivity. Coding is simple and fast, with a single button push points are ready for direct input to CAD.



## Complete system

GeoMax not only provides you with a highly productive instrument, but also with a complete set of accessories to meet your demanding tasks. With everything in one box, GeoMax "Works when you do!"

## Technical Data

Accuracy (ISO 17123-3)	2", 5"
Range with prism	3'500 m
Non-prism range (Zipp10R)	250 m
Accuracy with prism	2 mm + 2 ppm
Non-prism accuracy	3 mm + 2 ppm
Measuring time (Tracking/Quick/Fine)	0.33 sec/2.0 sec/2.4 sec
Reflectorless measuring time	3.0 – 6.0 sec

### GeoMax Zipp10 5", 2"

Distance Measurement on Reflector

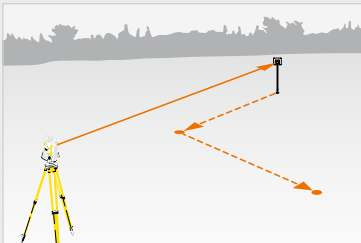
### GeoMax Zipp10R 5", 2"

Distance Measurement on Reflector  
250 m Non-prism Distance  
Measurement

### The complete total station

The Zipp10 series provides a choice of angular accuracies and distance measurement technology to suit your needs. The 5" instrument is suitable for general construction work, while the 2" instrument is for precise measurement tasks. With the optional reflectorless technology, distances can be measured to any surface within 250 m. With a complete range of on-board applications, all types of measurement tasks can be completed easily.

- Data Collect
- Set Out
- Resection
- Area
- Remote Elevation
- Missing Line



---

# GeoMax GPS/GNSS



## Zenith30 Series

With the powerful Zenith30 mobile PC and GeoMax Xsite software your entire project can be completed in the field.



## Zenith20 Series

Zenith20 offers tracks GPS, GLONASS and Galileo on 120 channels, providing access to a maximum number of satellites for reliable positioning.



## Zenith10 Series

The GeoMax Zenith10 is a complete and fully integrated satellite positioning system, tracking GPS and GLONASS signals with 72 channels.



## ZGP800 Series

ZGP800 provides a GPS system to surveyors that offers true price-to-performance and takes surveying productivity to the next level.





# GeoMax GPS/GNSS Zenith30 Series

At GeoMax we understand that you want all the latest technology in the field for maximum productivity. With the powerful Zenith30 mobile PC, your entire project can be completed in the field.

## Zenith30 Mobile PC

The Zenith30 is a rugged tablet PC with wide ranging functionality. Top performance starts with great power. The Zenith30 features an impressive 1.6GHz processor and runs the Microsoft Windows 7 Ultimate operating system. That means you will be able to work with all PC applications in the office and out in the field. When a large display is needed to work with detailed maps or other visuals, the 7" screen of the Zenith30 makes it a great solution.

## Communication

The Zenith30 integrates modern wireless communication technologies. The 3.5G modem provides high-speed data transfer and is globally compatible with GSM, GPRS, EDGE and UMTS network providers. Connection is also possible to a wireless local area network. Bluetooth® wireless technology allows cable free communication with the GNSS antenna and UHF radio modem.



## Performance Specifications

Super rugged mobile PC  
Intel Ultra low power 1.6 GHz processor, 2GB DDR RAM, 64GB SSD hard drive  
Microsoft Windows 7 Ultimate operating system  
Sunlight readable 7" touch screen

## Internal devices

Wireless LAN 802.11  
3.5G GSM/GPRS/UMTS/CDMA module  
Bluetooth 2.0 Class 1  
Integrated GPS receiver  
2 megapixel camera with flash

## ZGP800A

### GPS/GNSS Antenna

This multi-functional antenna can be implemented for a complete range of GNSS applications. With a pole or tripod setup, use the system for accurate RTK positions, providing raw data for post-processing or as a reference station. The ZGP800A is extremely rugged, withstanding extreme temperatures and IP66 protection. No matter how demanding the conditions, you can be sure that your ZGP800A "Works when you do!".

## Xsite Field Software

Combining CAD and advanced mapping functionality with stake-out and surveying in one software GeoMax Xsite brings your office to the field. Comprehensive import and export functions combined with its easy to use RTK and GIS applications make Xsite the field software that works when you do.



Geomax Xsite

GPS Survey

Point ID/Code: 374

Remark: Xsite

Antenna height: 2.000

Readings: ---

3D CQ: 0.016m

Latitude: 47° 24' 31.7239" N

Longitude: 9° 37' 04.9563" E

Eli. Height: 472.61m

East: 599999.99m

North: 300000.00m

Height: 200.01m

OCCUPY      RESET

17:03 23/05/2011

GEOMAX

# GeoMax GNSS

## Zenith10 & 20 Series

### The fully integrated GNSS

Zenith10 & Zenith20 are complete and fully integrated satellite positioning systems. They comprise of only two main components, a GNSS antenna and a handheld computer that can be setup on a pole or tripod.

The integrated wireless technology, provides a completely cable free and light-weight solution that is ready for an entire day's work.

FieldGenius software makes positioning easy and includes many features to satisfy even the most demanding user. Finish tasks faster than ever before with the fully integrated Zenith Series.



### Quality GNSS

Equipped with state-of-the-art NovAtel satellite receiver technology, the Zenith10 & Zenith20 provide maximum performance. The AdVance® RTK technology developed by NovAtel ensures maximum positioning availability under challenging conditions.

GeoMax offers two types of GNSS receivers, the Zenith10 with 72 channels and the Zenith20 with 120 channels. Both receivers can track satellite signals of the GPS and GLO-NASS type. The Zenith20 additionally supports Galileo. By having access to a maximum number of satellites, positions can be determined at any time, ensuring that Geomax GNSS works when you do!



### Complete flexibility

The Zenith10 & Zenith20 are completely flexible systems, with all of the communication devices integrated into the antenna. It's easy to swap between the UHF radio to receive correction data from a local reference station and the GSM modem to receive corrections from a regional network. At times when no corrections are available, raw data can be easily logged for post-processing in the office. Zenith10 & Zenith20 can also operate as a local reference station transmitting data either with the internal radio or an external high power transmitter. Zenith10 & Zenith20 are completely flexible.



### **One box, one price**

Zenith10 & Zenith20 include all components and accessories required for any type of measurement task. These are supplied in one rugged container to ensure nothing is left behind.

With no additional hidden costs, you're ready to go from day one with Zenith10 & Zenith20. This is the GNSS series you'll ever need for a quality and price unique in the market.

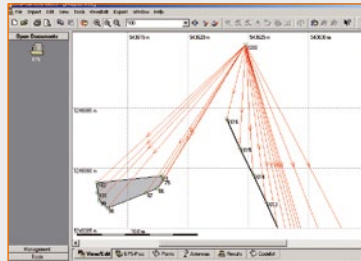


# GeoMax GNSS Zenith10 & 20 Series

## Office Software

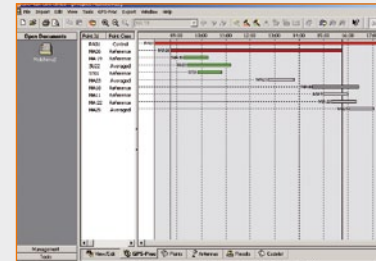
GeoMax offers GeoOffice (GGO) as a versatile PC software to handle all your fieldwork. GGO is based on an intuitive, graphical interface making it quick to learn and easy to use.

All the data is displayed graphically providing a clear overview of your work. By simply selecting any element, the related information can be accessed or edited.



## Flexible Import and Export

Data can be transferred directly between GeoMax instruments and GGO. The flexible ASCII export allows the creation of data files in any format.



## Coordinate Transformations

GGO includes a range of tools for defining coordinate systems and to transform coordinates into a local system. Using geoidal models, GNSS measured ellipsoidal heights can be converted to orthometric heights.

## Receiver specifications

Novatel AdVance® technology  
Zenith10 72 channels (GPS/GLONASS)  
Zenith20 120 channels (GPS/GLONASS/Galileo)  
Satellite signals tracked: GPS L1, L2, L2C, GLONASS L1, L2, Galileo\*  
5 Hz raw measurement & position outputs, 20Hz optional  
RTK signal initialization typically less than 10 sec\*\*  
Initial capture time < 15 sec\*\*  
Internal memory 256 MB (more than 60 days of raw static data storage with recording sample every 15 sec)

## Receiver accuracy

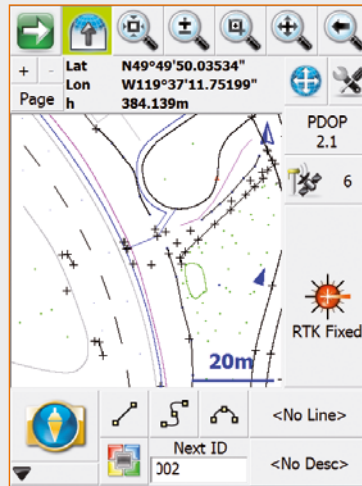
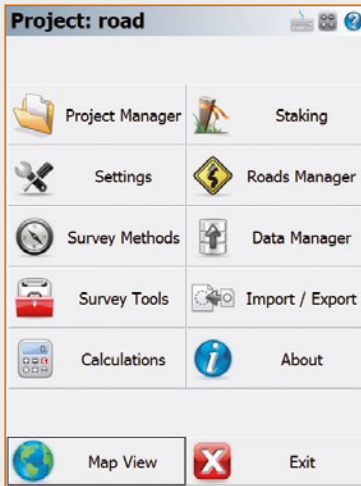
Static horizontal accuracy	5 mm ± 0.5 ppm (RMS)**
Static vertical accuracy	10 mm ± 0.5 ppm (RMS)**
Kinematic horizontal accuracy	10 mm ± 1 ppm (RMS)**
Kinematic vertical accuracy	20 mm ± 1 ppm (RMS)**
DGPS/RTCM differential positioning	0.25 m (RMS)**

\* The optional Galileo tracking will be made available once there are sufficient of these satellites.

\*\* The position accuracies depend on various factors including number of satellites, geometry, ionospheric conditions, multipath, etc.

## GNSS Post Processing

Raw data can be imported into GGO from all types of GNSS sensors. The Post Processing module allows extended user control over the parameters used in the baseline computations. Result reports provide detailed information about the processing procedure and accuracies obtained.



### Field Software

Zenith10 & Zenith20 are open systems that support any Windows Mobile based field software. A standard Zenith Series configuration is supplied with GeoMax FieldGenius, a fully featured intuitive field software package. With large main menu icons, tasks can be quickly found and executed directly with the touch screen.

Your survey work is always shown graphically to ensure you see all of your design and measured data. Elements can simply be selected by using the touch screen display.

Supporting a full range of export formats, your field work can be transferred directly to your office software.



# GeoMax GPS/GNSS

## ZGP800 Series

With the ever increasing demand to complete projects faster and faster, surveyors are looking for technologies to help them improve their productivity. GPS/GNSS is one of the latest technologies that delivers surveyors with a new tool to increase productivity. The GeoMax ZGP800 introduces a GPS/GNSS system to surveyors that provides true price-to-performance and takes surveying productivity to the next level!

### Easy, yet powerful

The ZGP800 sets new standards in ease-of-use without compromising functionality. With a color Windows CE controller, complete with intuitive touch screen functionality, users become experts in record time. Using new technology has never been so easy!

### Built for all environments

With the design criteria "Works when you do!" GeoMax products are built to withstand all environmental conditions. With robust specifications, the ZGP800 antenna and controller survive topple over falls. Rain, hail, snow or intense heat will never affect your ZGP800, you can always keep working to get the job done.

Applications:

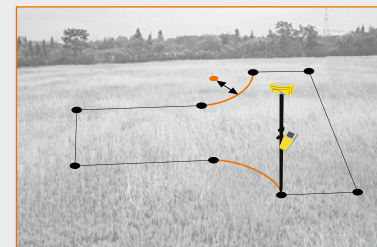
- **Setout**
- **COGO Routines**
- **Survey**
- **Reference Line**
- **Area**
- **Site calibration & Coordinate Systems**

### Performance Specifications

GeoMax Q-Lock technology  
Cable-free GNSS with Bluetooth® wireless-technology integrated on the pole  
Network capable GNSS (GPS + GLONASS)  
20 Hz Positioning rate  
72 channel

### Controller

Display	Colour illuminated ¼ VGA daylight-readable touch screen
Operating System	Windows CE
Communication	3 Bluetooth® ports, USB & serial port
Storage	Removable CF card up to 1 GB, about 7,800 hours L1+L2 data logging at 15 sec rate







### Complete system

GeoMax not only provides you with highly productive equipment, but also with a complete set of accessories to meet your demanding tasks. With everything in one box, GeoMax "Works when you do!".

### Raw Data Logging

With an exceptionally large memory of up to 1 GB, practically endless GNSS raw data can be logged for post-processing. Upon completion of data collection, the removable CF card can simply be transferred to a PC for post-processing to deliver the final accurate coordinates.



# GeoMax Digital Level

## ZDL700 Series

At GeoMax we understand that you require accurate results and demand ease of use in combination with fast operation. That's why we've introduced the ZDL700 digital level for the surveying and construction world. Now you can 'go digital' for your entire levelling task with a product that delivers outstanding price-performance and "Works when you do!".



### Quick, Easy & Error-free

The super fast measurement speed of less than 3 seconds in combination with the simplicity of the one-push measure and store functionality provides faster, more economical workflow. Digital reading combined with internal memory make miss-readings and operator interpretation errors a thing of the past.

### Leave the Calculator in your pocket

The onboard adjustment program, height difference calculation, inverse staff measuring mode, in combination with various measuring configurations enable you to

execute all calculation with the ZDL700. Based on digital readings and automated calculation, never again will time consuming use of a calculator slow you down.

### Accurate

Extensive field tests verify the excellent accuracy of the ZDL700 of 0.7 mm for 1 km double-run level. This makes the ZDL700 an ideal level not only for high order levelling but also deformation measurements and precise surveying, as well as general construction.

### Technical Data

Height accuracy	$\pm 0.7 \text{ mm/km}$
Distance accuracy	$D < 10 \text{ m}, 10 \text{ mm}$ $D \geq 10 \text{ m}, 0.001 \times D$
Maximum Range	105 m
Single measurement speed	< 3 seconds
Internal memory	2'000 measurements

# GeoMax Digital Theodolite Zipp02

Closing the gap, Zipp02: For all your general construction tasks requiring accurate angle measurement. Affordable, easy to use, flexible – simply “Works when you do”.

## Zipp02 – Closing the gap

With vertical compensation and 2" accuracy the Zipp02 provides you with the precision required for your most demanding jobs for an affordable price without adding complexity. Various display modes, hold and set zero for horizontal angle, a variation of measurement units, simple distance measurement via

stadia lines make an easy operation with only six keys. Visible laser plummet enables you to set up over a point faster and easier than ever. The Zipp02 is the tool of your choice when it comes to checking angles, alignments, grade work and short range levelling.

## Technical Data

Precision	2"
Magnification	30x
Compensator System	Automatic vertical compensator, User set On/Off
Display	Double side large character back-lit LCD
Keys	6 one touch button functions
Operation period without laser plummet	36 h



# GeoMax Automatic Level

## ZAL300 Series

Get all your tasks done with GeoMax's flagship level. From daily levelling tasks to high accuracy – the ZAL300 Series is your first choice where robustness, comfort and accuracy count. It simply "Works when you do!"

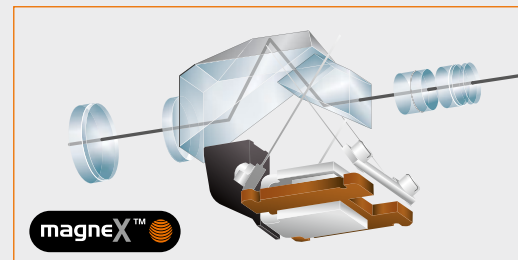
### Flexible and ergonomic

With four different types of magnifications, 20x, 24x, 28x and 30x, the ZAL300 series offers the accuracy of your choice. The patented *magneX™* compensator system from GeoMax used in the ZAL300 series with magnetic dampening makes stuck a thing of the past.



### Technical Data

	ZAL330	ZAL328	ZAL324	ZAL320
Magnification	30x	28x	24x	20x
Minimum focusing distance	0.8 m	0.6 m		
Damping system	<i>magneX™</i> , automatic, magnetic-damped			
Standard deviation for 1km double-run levelling	1.2 mm	1.5 mm	2.0 mm	2.5 mm
Horizontal fine motion screws	Double-sided endless drive			
Dust and Water resistance	Conforms to IP57 (Gas filled telescope)			
Base / Base screw	Concave and flat / 5/8"			



# GeoMax Automatic Level ZAL100 Series

Suitable for outdoor as well as for indoor use the user friendly ZAL100 Auto Level Series from GeoMax is your guarantee to get the job done, accurate and on time.



## Built to Last

With the ZAL100 Series GeoMax introduces an automatic level to the construction industry designed for your daily levelling tasks with outstanding price-to-performance ratio. Meeting the IP54 class specifications guarantees waterproofing of the ZAL100 Series and provides you with an instrument that "Works when you do!".

Technical Data	ZAL132	ZAL128	ZAL124	ZAL120
Magnification	32x	28x	24x	20x
Image	Erect			
Minimum focusing distance	< 1.0 m			
Damping system	Automatic, air-damped			
Standard deviation for 1km double-run levelling	2.0mm			2.5mm
Graduation / Intervals	360° / 1°			
Horizontal fine motion screws	Double-sided endless drive			
Dust and Water resistance	Conforms to IP54 (IEC60529)			
Base / Base screw	Concave and flat / 5/8"			



# GeoMax Laser Rotator

## ZEL400 Series

With its proven performance the ZEL400 laser rotator series covers the whole range from internal applications to general construction – a true multi-purpose tool.



### Solid & Economic

Totally automatic and therefore easy and fast to setup, in combination with advanced technology GeoMax delivers a laser rotator with outstanding

price to performance ratio. Its ruggedized design, protected head and waterproof housing makes the ZEL400 series the tool for all your tasks that “Works when you do!”.

Technical Data	ZEL400HV	ZEL400H+	ZEL400H
Range	300 m (diameter)		
Levelling range	±10 %		
Levelling	h & v auto	h auto & v semi-auto	h auto
Accuracy (at 30 m)	h: ± 3 mm v: ± 3 mm	h: ± 3 mm v: ± 10 mm	h: ± 3 mm v: N.A.
Tilt alert control	yes		
Battery	2 Alkaline D size, 160 hours, NiMh rechargeable 50 hours		
Detector/Remote Control	ZDR300 Detector w. integrated remote controll	ZDT200 Detector	

# GeoMax Laser Rotator ZLT300/200 Series

At GeoMax we understand that your equipment should be as flexible as you. With the ZLT300 and ZLT200 we introduce a series of multi-purpose lasers that cover all the range from machine control, site work, pipe laying to interior finishing.

## We level, you work

Now is the time to stop chasing bubbles to get your job levelled. And the good thing is that you are only one button push away. From site work and levelling to alignment, pipe laying, interior finishing and civil engineering projects, the ZLT300 and ZLT200 are the partners that help you to get the job done in time, with the required accuracy and reliability. And all of this to the price-to-performance ratio GeoMax is known for.



## Dual Grade Slopes

With the manually adjustable grades you can simply match slopes in one or two axis by using the laser in manual mode. While used on one manual slope the automatic cross axis self levelling provides you with maximum security.

## Technical Data

	ZLT300	ZLT200
Range	800 m (diameter)	
Levelling range	±8% ±5°	
Levelling	Automatic horizontal and vertical	Automatic horizontal
Accuracy	±10 mm at 100 m	
Tilt alert control	User definable laser shut-off	
Laser Battery life	50h with internal rechargeable NiMH battery	
Environmental	IP67 waterproof	
Detector/Remote Control	ZDR300 Detector with integrated remote control	ZDT200 Detector



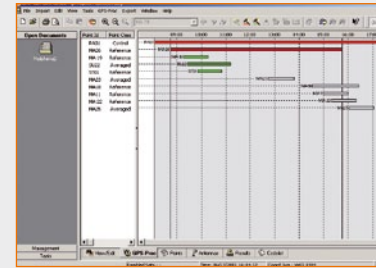
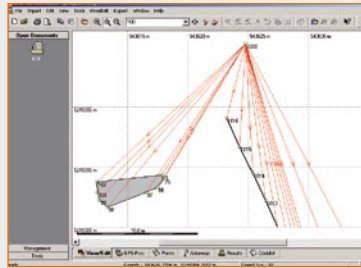
# GeoMax Software

## GGO – GeoMax Geo Office

GeoMax Geo Office (GGO) is the ideal office software companion for your GeoMax field equipment. With complete seamless data-flow your field results are effortlessly transferred to the office environment ready for further processing, CAD creation or direct delivery to clients.

### Easy-to-use

Following Microsoft Windows standards GGO is easy-to-use, even for novice PC users. Through use of icons and graphics working with data in GGO is as easy as “point and click”.



### RINEX Import/Export

Support of GNSS processing using multiple sensor brands is assured thanks the GGO's RINEX Import/Export option. By using the industry standard RINEX format you can import 3rd party receiver data and post-process in GeoMax Geo Office.

### Prepare, Visualize and Edit

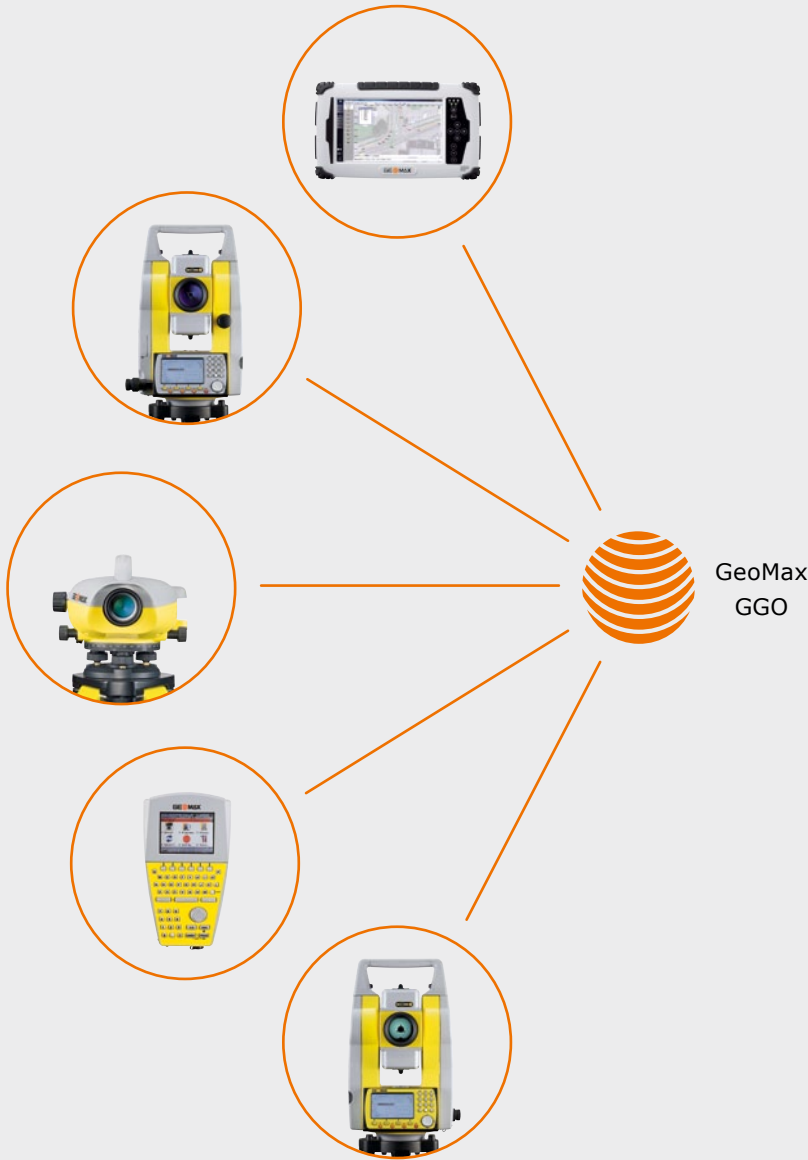
Prior to going into the field GGO has a full suite of tools that allow you to get the most out of your equipment. With a little preparation you're ready to be fully productive to work the way you work. Once you've completed your survey and seamlessly imported your field results into GGO, all observations are immediately available for visual confirmation of field activities. If errors or changes are found they can be easily edited to deliver perfect results.

### Data Processing and Reporting

When post-processing of GNSS (GPS+GLONASS) data is required, GGO provides state-of-the-art technology to guarantee you always produce optimal results. No special knowledge of GNSS is required; simply import data and GGO will automatically process all possible GNSS baselines. Once results are available they can be simply presented in customized reports to ensure that you need to do no further preparations, your results are directly ready for clients.

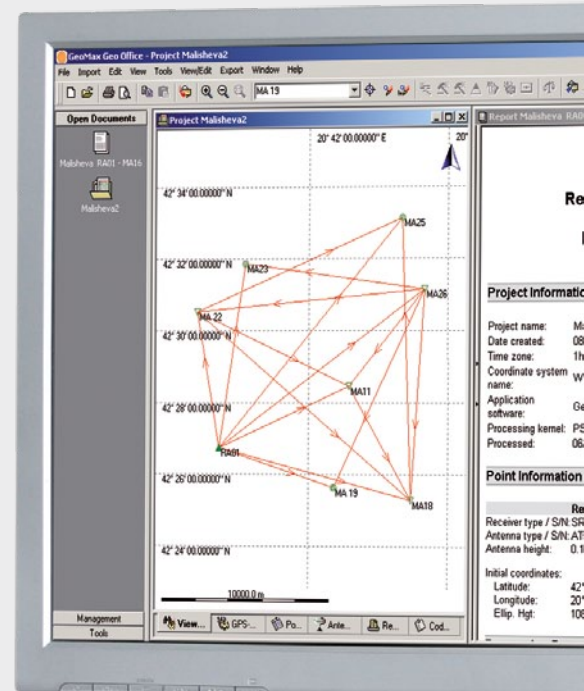






### Least Squares Adjustment

A rigorous 3D least squares adjustment package is available in GeoMax Geo Office. This option allows the adjustment using least squares of GNSS, total station and combined data using a variety of different parameters and coordinate systems. The results are stored in well designed HTML reports.



---

# GeoMax Accessories

Reliable work demands reliable accessories. We recommend the individually tested GeoMax accessory selection for the highest confidence in all your tasks. Of a quality that meets the highest demands, you can be assured that the complete range of GeoMax accessories "Works when you do!".



## **CTW100**

Wooden tripod with shoulder strap and side clamp screws, 104 cm packaged length, extendible to 166 cm, weight 5.7 kg.



## **CTA100**

Aluminium light weight tripod with shoulder strap and side clamp screws, 105 cm packaged length, extendible to 167 cm, weight 4.5 kg.



## **ZST101**

Tripod-star, for setting up of tripods on hard and slippery surfaces.



**ZST100**

Telescopic, dual-strut pole support. Suitable for all GeoMax poles and level staffs.



**ZPT101**

Telescopic prism pole extending to 215 cm, graduated in cm and feet.



**ZPC200**

Telescopic Carbon Fibre and aluminium pole. Extends to 250 cm.



**ZCA102**

Reflector carrier with plate level and optical plummet, for precise positioning.



**ZTR101**

Tribrach without optical plummet, black.

**ZTR103**

Tribrach with optical plummet, black.

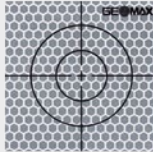


**ZCA101**

Tribrach carrier with stub for prisms.



# GeoMax Accessories



## ZTM100

Self-adhesive reflective target 6 x 6 cm. For measurement of surfaces with standard EDM.



## ZPR100 and ZTP100

Circular prism with red holder, 0-offset. The ZTP100 target plate for precise aiming over long distances is separately available.



## ZCB100

Backstrap for hard shell containers.



## ZCT102

Hard shell container for 2 circular prisms, 2 carriers and 2 tribrachs.

## ZSA504

Four-section telescopic staff. Provides dual measuring faces with bar code and millimetre graduations.

## ZSF301

Dual face high accuracy fibreglass levelling staff, 3 m, 1 section, Barcode/ E-Scale cm-graduation, with circular bubble and handle.

## ZSE504

Level staff 5 m, 4 sections, front side with E-graduation and back side with mm-graduation.





### **ZCH201**

Rapid charger for Li-Ion batteries. Includes car adapter cable.



### **USB Memory Stick**

The 4GB memory stick is suitable for GeoMax instruments, providing the highest data reliability.



### **ZPM100**

Sliding Mini-Prism. True 0-Constant Prism, includes Bubble, 4 mini poles and pole tip.



### **ZBA201/ZBA200**

High output Li-Ion batteries provide long working times.



### **ZCM101**

Industrial CF-card 256MB, protects data even when dropped or with extreme temperatures.



# GeoMax Quality Management

## Our Commitment to Safety and the Environment

All GeoMax products are fully CE (Conformité Européenne) as well as RoHS (Restriction of the use of certain hazardous substances in electrical and electronic equipment) and WEEE (Waste from Electrical and Electronic Equipment) conformant.

## Our Commitment to Quality

The internationally active Swiss Association for Quality and Management Systems SQS, as well as the International Certification Network IQNET certified that GeoMax AG meets the requirements of ISO9001, Quality Management System and ISO14001, Environmental Management System.

- Certified Area:  
Whole Company.
- Field of Activity:  
Development, manufacture, distribute, support and service of products, precision tools and systems for geomatic, industrial and construction applications.



## Built for all environments

With the design criteria "Works when you do!" GeoMax products are built to withstand all environmental conditions. GeoMax equipment is built with the intention to withstand all conditions you run into during your daily work. Rain, hail, snow or intense heat will never affect your GeoMax equipment, you can always keep working to get the job done.



# GeoMax Distributors

For further information or a demonstration of any product in this catalogue, please contact your local GeoMax distributor. GeoMax distributors are represented in most countries worldwide.

For contact details of your local GeoMax representative, please email to [info@geomax-positioning.com](mailto:info@geomax-positioning.com).

Additional brochures containing detailed specifications of GeoMax products can be downloaded from the GeoMax website at [www.geomax-positioning.com](http://www.geomax-positioning.com)



**GEOMAX**  
Part of Hexagon Group



**Distance meter (Reflector Mode):**

Laser class 1 in accordance with IEC 60825-1 resp. EN 60825-1

**Laser plummet:**

Laser class 2 in accordance with IEC 60825-1 resp. EN 60825-1

**Distance meter (Reflectorless Mode SR/LR):**

Laser class 3R in accordance with IEC 60825-1 resp. EN 60825-1

Windows® CE and Windows® 7 is a registered trademark of Microsoft Corporation.

The Bluetooth® word mark and logos are owned by Bluetooth SIG.

NovAtel OnBoard® is a registered trademark of NovAtel Inc.

Other trademarks and trade names are those of their respective owners.

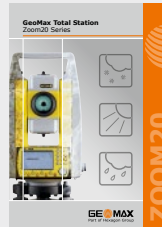
# GeoMax Brochure Basket



**Total Station**  
Zoom80 Series



**Total Station**  
Zoom30 Series



**Total Station**  
Zoom20 Series



**Total Station**  
Zipp10 Series



**GPS/GNSS**  
Zenith30 Series



**GPS/GNSS**  
Zenith10 & 20 Series



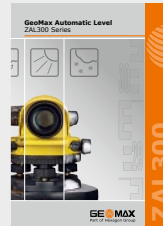
**GPS/GNSS**  
ZGP800 Series



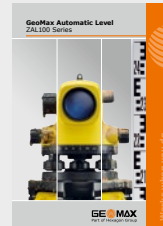
**Digital Level**  
ZDL700 Series



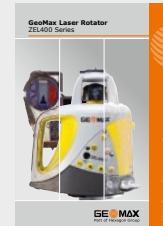
**Digital Theodolite**  
Zipp02



**Automatic Level**  
ZAL300 Series



**Automatic Level**  
ZAL100 Series



**Laser Rotator**  
ZEL400 Series



**Laser Rotator**  
ZLT300/200 Series

Copyright GeoMax AG. Illustrations, descriptions and technical specifications are not binding and may change.  
Printed in Switzerland / 3.2012 / 768325en